

Strawberry Sampler

DESIGN SIZE: 104H X 171W

Designed by Kandace Thomas using new colors of Kreinik silk threads

Materials

- 2.5m skein (also known as 1/2 Skein™) of Silk Mori in each: 7087 Very Dark Straw, 1096 Dark Wood Violet, 8086 Dark Gray, 9034 Medium Neutral Flesh
- one 5m skein and one 2.5m skein of Silk Mori 4206 Dark Sage
- one reel of Silk Serica in 4206 Dark Sage
- #22 Tapestry needle to use with Silk Serica
- #24 Tapestry needle to use with Silk Mori
- 28-count creme Cashel Linen

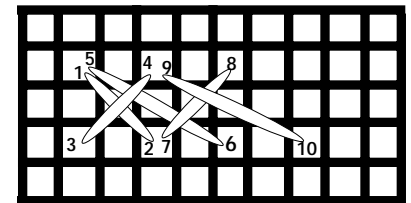
Instructions & Color Key

This design is stitched over two threads, so each square on the chart equals two fabric threads.

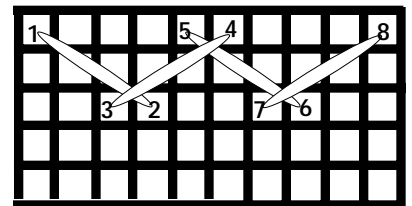
Use Silk Serica as it comes, straight from the reel as a 3-ply twisted filament silk. Do not separate it into plies. You may wish to moisturize your hands with a non-greasy hand creme to keep the filament silk from snagging on rough spots. Use 15-inch lengths of Silk Serica so that it doesn't become abraded by too many passes through the fabric. Since we naturally turn our needles as we stitch, let your needle dangle after every stitch to allow the thread to relax (this will keep it from becoming too tightly twisted or untwisted).

When plying Silk Mori, remove the paper wrapper and loosen the slip knot holding the thread ends together. Cut about a 15- to 18-inch length, then remove one ply at a time, straightening the thread after each ply has been pulled out, and recombining the appropriate number as listed below. When using two strands, lay your stitches neatly so that the silk's natural, creamy sheen is maximized.

- 4 Cross stitch with two strands Silk Mori 4206
- ✕ Herringbone stitch with two strands Silk Mori 7087
- Cross stitch with two strands Silk Mori 1096
- Cross stitch with two strands Silk Mori 9034
- ⬇ Double backstitch with two strands Silk Mori 4206
- ↑ Cross stitch with two strands Silk Mori 8086
- ▲ Cross stitch with two strands Silk Mori 7087
- ✳ Algerian Eyelet stitch with one strand Silk Mori 7087
- ||| Satin stitch with Silk Serica 4206



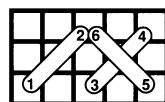
Double Backstitch



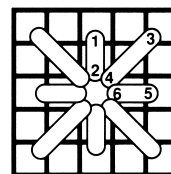
Herringbone Stitch

Stitch Diagrams

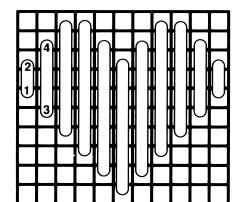
In the diagrams below, you come up at 1 and down at 2, etc. You may also wish to check out some of the needlework books in your library or local shop for additional assistance with these stitches.



Cross Stitch

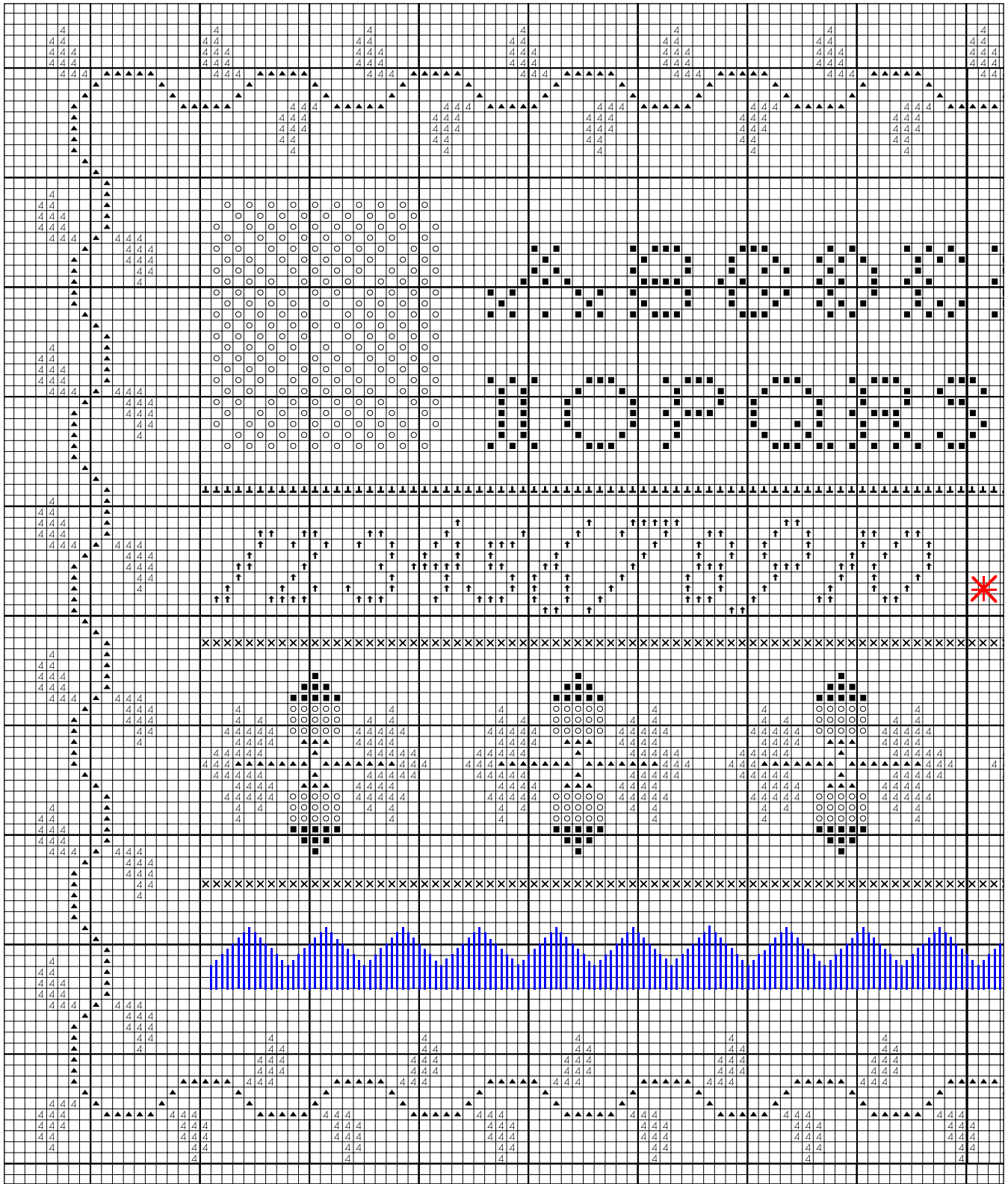


Algerian Eyelet



Satin Stitch example; refer to main graph for line length and position

Note: this chart represents the left half of the design. Print both pages of the graph, then attach here. ↘



For questions or comments regarding Kreinik silk threads, where to find them or how to use them, contact our Consumer Hotline at 1-800-537-2166 or e-mail us at kreinik@kreinik.com. Stitching tips and information on Kreinik Silk Mori and Silk Serica can also be found on www.kreinik.com, in the "Threads" section.

© Copyright 2000 Kreinik Mfg. Co., Inc. This chart may be reproduced but not sold.

Chart below represents the right half of the main graph.

