

Snowflake Stitches

Work the Van Dyke needlepoint stitch in metallic blue, white, and silver for a pretty winter design. We used an ornament frame from a craft store for the finishing; look for similar ones at discount or department stores around the holidays.

Materials needed:

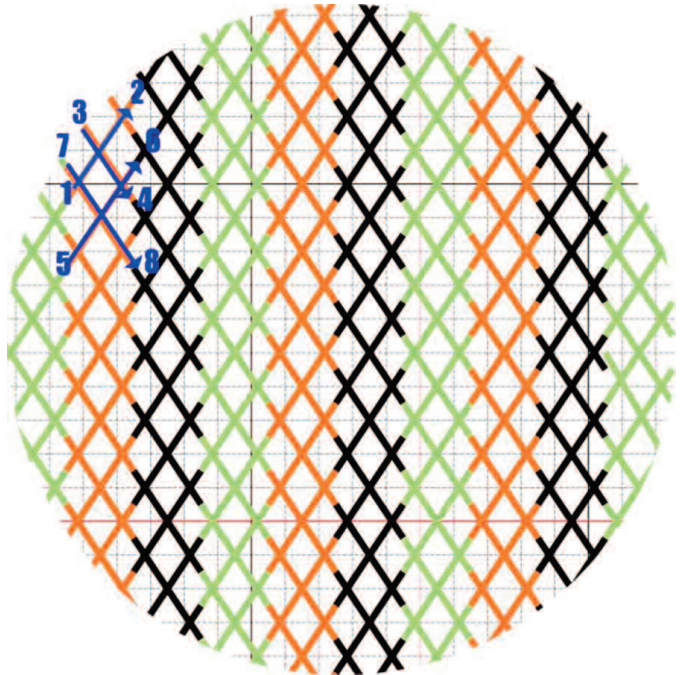
- white 14-count perforated paper (we used a 3" x 3" piece for our model)
- Kreinik Fine #8 Braid in 5760 Marshmallow, 001L Solar Silver, 9732 Blue Grass
- #22 or #24 Tapestry needle
- purchased ornament frame
- option: mini silver snowflake ornament (we found ours at a craft store)

Instructions:

Work the Van Dyke stitch according to the graph. Adjust the design size as needed to fit your frame. Come up at 1, down at 2, up at 3, down at 4, etc.

Green lines: use #8 Braid 9732
Orange lines: use #8 Braid 5760
Black lines: use 001L

When finished, if desired, attach mini snowflake ornament using spare floss or thread.



© Copyright 2014 Kreinik.
May be reproduced but not sold.

Kreinik Mfg. Co., Inc.
www.kreinik.com
info@kreinik.com