

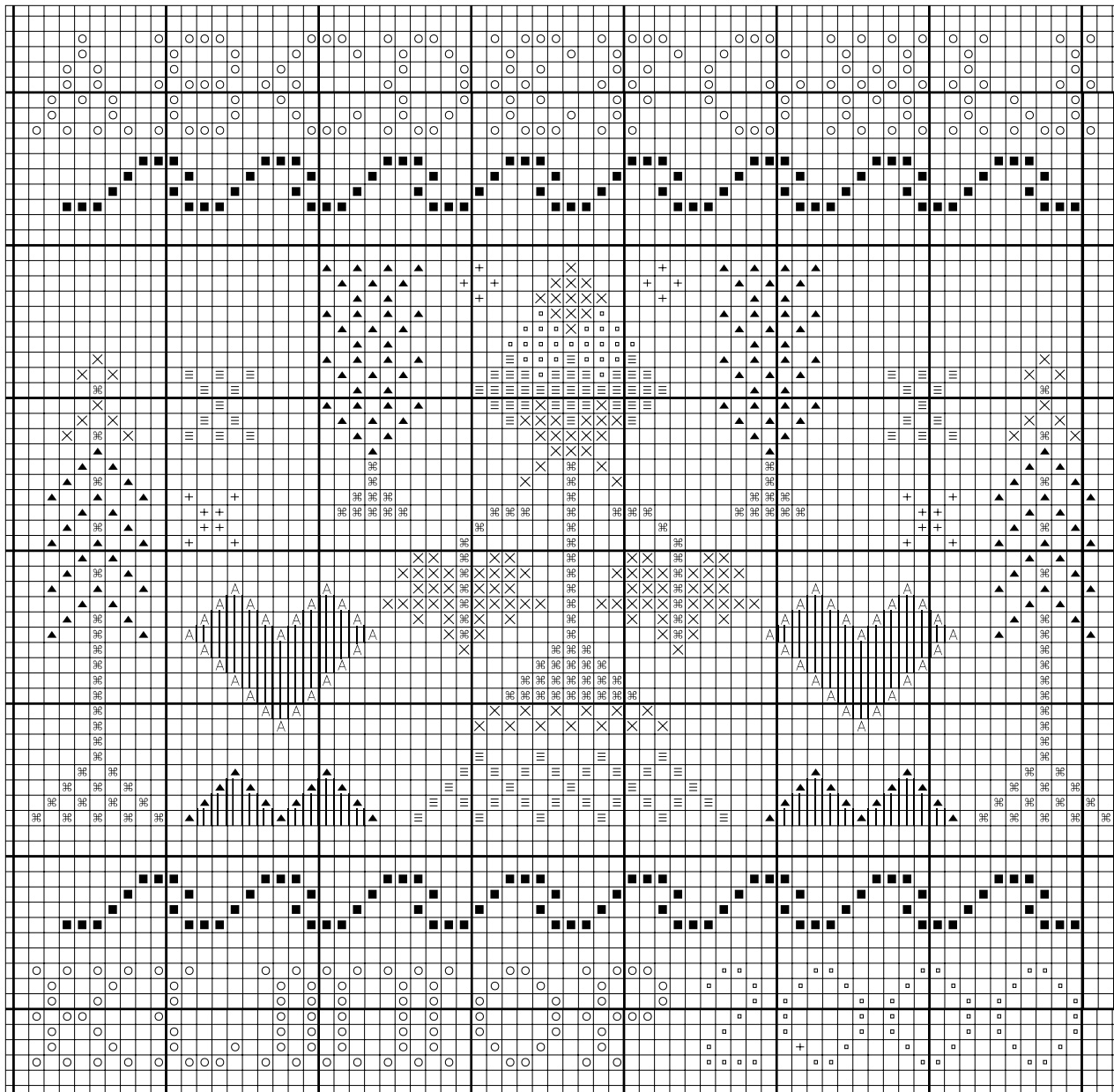


September Sampler

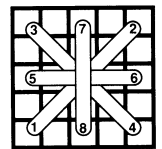
A SILK THREAD DESIGN BY KANDACE THOMAS

Materials:

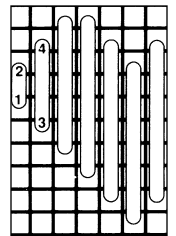
- 2.5m Skeins of Kreinik Silk Mori® in 3015 Medium Dark Coral, 4166 Dk Victorian Green, 4167 Vy Dk Vict Green, 5055 Medium Dark Slate Blue, 6086 Dark Grape, 6106 Dark Lavender, 7133 Light Bark
- 32-count Antique Tan linen (Wichelt Imports)



This design uses several different stitches: cross stitch, smyrna stitch and satin stitch.



(Smyrna)



(Satin stitch)

Use one strand of Silk Mori for cross and smyrna stitches. Use two strands of Silk Mori for satin stitches. Each square on the chart equals **two** fabric threads.

Color key and stitch guide:

- ▲ 4167 Vy Dk Vict Green in cross stitch
- 5055 Md Dk Slate Blue in cross stitch
- × 4166 Dk Vict Green in cross stitch
- ≡ 6086 Dark Grape in cross stitch
- ◻ 6106 Dark Lavender in cross stitch
- + 3015 Md Dk Coral in cross stitch
- ⌘ 7133 Light Bark in smyrna stitch
- A 3015 Md Dk Coral in smyrna stitch
- 7133 Light Bark in cross stitch

© Copyright 2000 Kreinik
1-800-537-2166
or email kreinik@kreinik.com

Design size: 70w x 68h