

FLORAL BOUQUET ON SILK GAUZE

DESIGNED BY TERRIE LYN NUTTER

Materials needed:

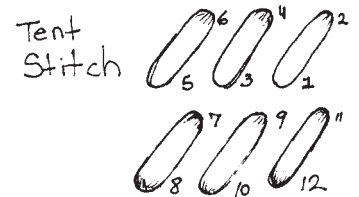
- Kreinik Silk Mori® (one 2.5m skein of each) as listed in color key
- one 4" x 4" piece of framed 40-count silk gauze from Kreinik
- one #10 crewel needle

Design size: 40 x 40

Instructions:

This design is stitched over one thread centered on your piece of 40-count silk gauze. Each square on the chart equals one fabric thread. Use one strand of Silk Mori in the tent stitch according to color key.

Finish this design as a mini pillow, or insert into an antique brooch.

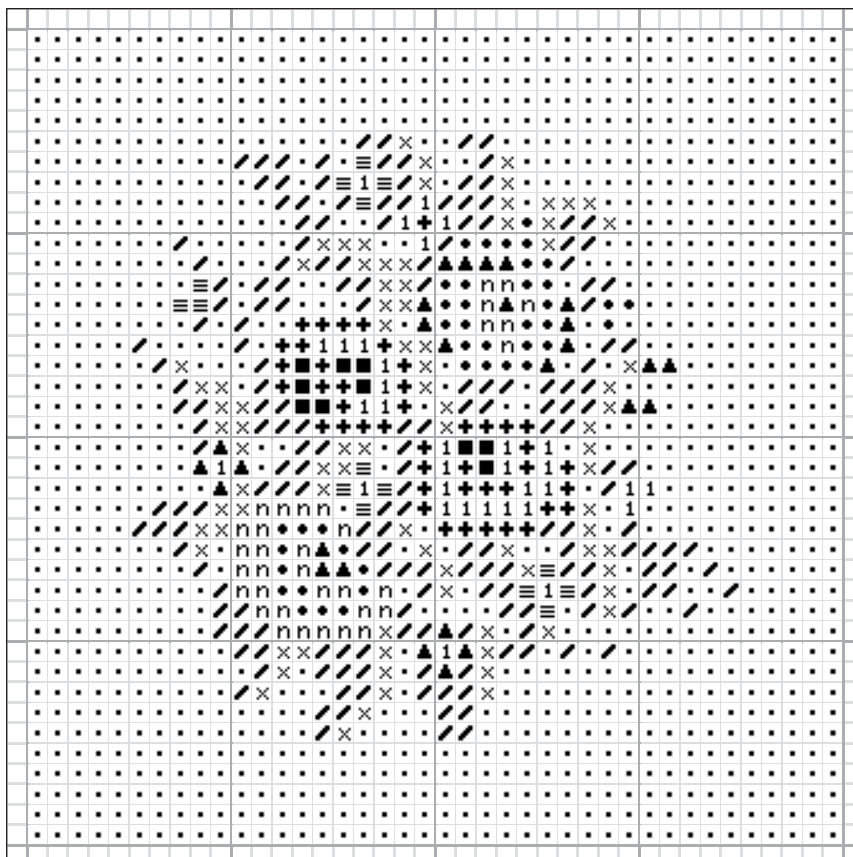


What is silk gauze?

Silk gauze is a 100% pure filament silk canvas. The silk threads are fine but very strong. Silk gauze is woven in a leno structure, which increases the stability of the canvas. Leno weave actually interlocks the weft threads making it almost impossible for them to shift. It comes in various sizes, including 18-count, 32-count and 40-count. Stitch on silk gauze anytime you want a small, delicate piece of needlework. Miniaturists and doll house enthusiasts enjoy silk gauze needlepoint pieces because you can achieve realistic looking items. For example, doll house rugs, pillows, pictures, and bell pulls can be stitched to scale: 40-count silk gauze is perfect for 1-inch to 1-foot scale.

Starting at the top of a chart makes it easier to keep your place on the chart while stitching. A magnet board will also help, or simply cross out stitches on the chart that have been completed as you go along. When starting a thread, try to use an 'away waste knot' to begin. You may sometimes be able to end a thread using this same technique, resulting in less bulk on the back of your work. When ending threads by 'running' under

stitches, use caution so that the tension of the stitches is not changed. A dark piece of cloth behind your work makes the holes of the silk gauze 'pop' and you can see the thread intersections that need to be covered.



Color Key for Silk Mori®:

- 4033 Lt Kelly Green
- × 4034 Md Kelly Green
- + 2027 Vy Dk Buttercup
- 2015 Md Dark Gold
- 1 2024 Md Buttercup
- ▲ 1033 Light Pink
- 1032 Lightest Pink
- ∩ 3011 Vy Pale Coral
- ≡ 6104 Md Lavender
- 7124 Cream

© Copyright 2003 Kreinik. All rights reserved.
 Kreinik Consumer Info: 1-800-537-2166 or
www.kreinik.com