

Candy Cane Needlepoint Ornament

a new family heirloom for your tree

Designed by Sharon Mann featuring Kreinik silk and metallic threads

Design size: completed ornament is about 2 3/4" x 2 3/4"



Materials:

- Kreinik Silk Mori: 2015 Medium Dark Gold
- Kreinik Silk Mori 4036 Dark Kelly Green
- Kreinik Silk Mori 7012 Lightest Lead Grey
- Kreinik Tapestry #12 Braid 202HL Aztec Gold Hi Lustre
- Kreinik Tapestry #12 Braid 008HL Green Hi Lustre
- Kreinik Tapestry #12 Braid 001 Silver
- Kreinik Tapestry #12 Braid 003 Red
- Kreinik Iron-on 1/8" Ribbon 6140 Christmas
- Household Iron or craft iron
- Kreinik Teflon Press Cloth
- 14-mesh mono needlepoint canvas, color antique brown, size 3.5" x 3.5"
- Red, green seed beads
- One piece of 9" x 12" green felt for backing fabric
- Other: scissors, size #20 Tapestry needle, sewing needle, small amount of polyester fiberfil, ruler

Instructions:

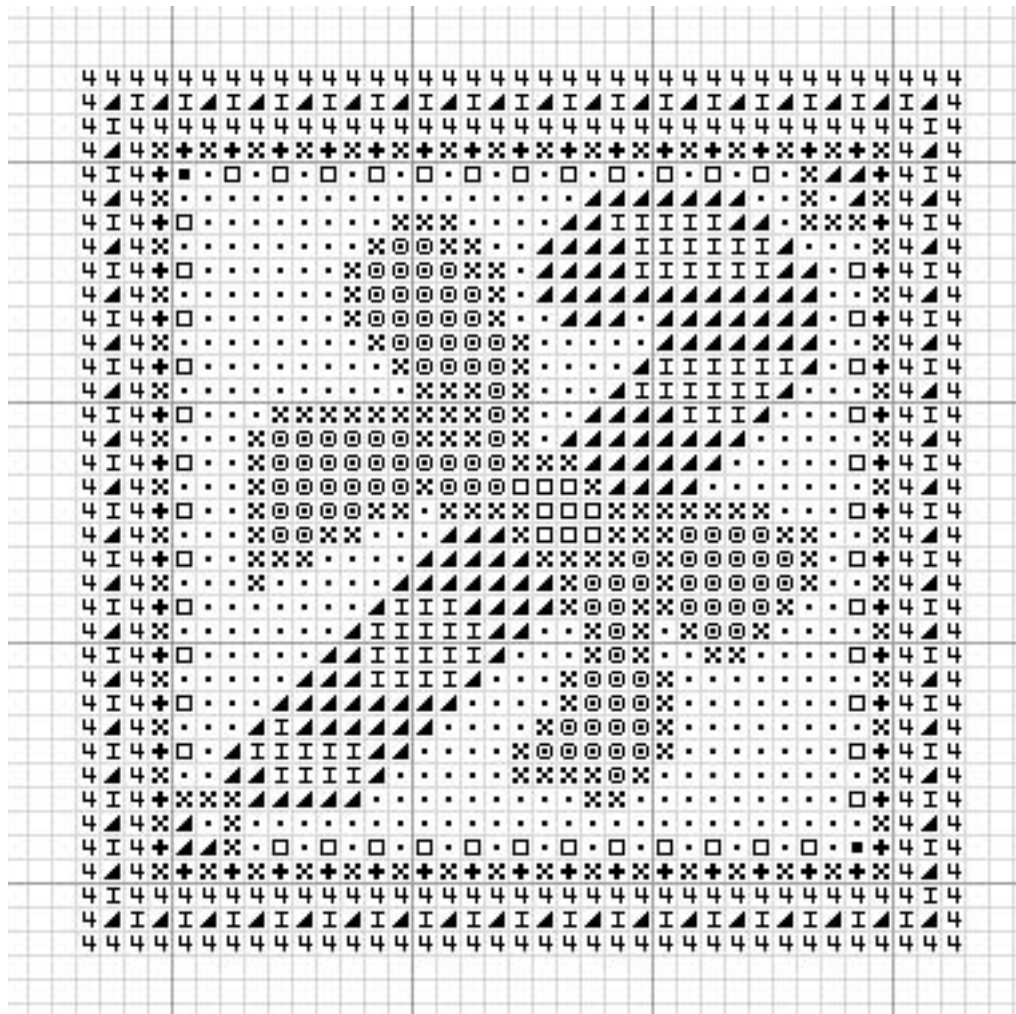
Tent stitch THE design centered on your 14-count mono canvas using three strands of Silk Mori, or Tapestry #12 Braid as it comes (right off the spool), according to the color key. Sew on beads after needlepoint pattern is stitched.

Iron the 1/8" Ribbon around the completed pattern, using a Teflon Press Cloth between your hot iron (high heat) and the metallic thread.

Assembly:

Cut a 2 3/4" x 2 3/4" piece of green felt. Fold under the excess needlepoint canvas and either pin or tack in place. Tuck in the loose iron-on ribbon. Attach a 3" piece of looped metallic thread at the top of the ornament for hanging. Sew green felt to the back of the ornament on three sides. Add a small amount of polyester fiberfil and sew remaining side closed.

© Copyright 2009 Kreinik. May be reproduced but not sold.
Consumer Info: 1-800-537-2166 or www.kreinik.com



- ✱ #12 Braid 202HL.Aztec Gold Hi Lustre
- Silk Mori 7012 Lightest Lead Grey
- 4 Silk Mori 4036 Dark Kelly Green
- ✦ #12 Braid 008HL.Green Hi Lustre
- ⊙ Silk Mori: 2015 Medium Dark Gold
- ⊞ #12 Braid 001 Silver
- ▲ #12 Braid 003 Red
- Red Beads
- Green Beads