

# Wintertide

DESIGNED BY PATRICIA ANDRLE

A Hardanger ornament using  
Kreinik Silk Mori® & Silk Serica®

Visit [www.kreinik.com](http://www.kreinik.com) for stitching tips, free designs, and information on these two premium-quality, pure silk threads. Whether you're stitching a special gift, a family heirloom, or home decorations, these soft and easy-to-use threads will delight your fingers and your eyes.

## MATERIALS NEEDED:

- Silk Serica in 1116 Dark Christmas Red, 4066 Dark Holly, and 8000 Soft White
- Silk Mori (one 2.5m skein of each) in 7087 Very Dark Straw and 8000 Soft White
- 9" x 9" piece of 28-count white linen

## INSTRUCTIONS:

Stitching Tips: Moisturize fingers with a non-greasy hand cream to keep the silk from snagging on rough spots and cuticles. Use a needle large enough to accommodate the thread, otherwise fraying will occur. Let your needle hang frequently to let Silk Serica return to its natural twist.

— • Work all the Kloster blocks over four fabric threads using Silk Serica 8000. Use Serica as it comes straight from the reel, as a 3-ply twisted filament silk (do not separate into plies).

— • Then work the outside edge of the design in buttonhole stitch with Silk Serica 8000.

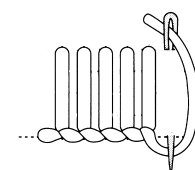
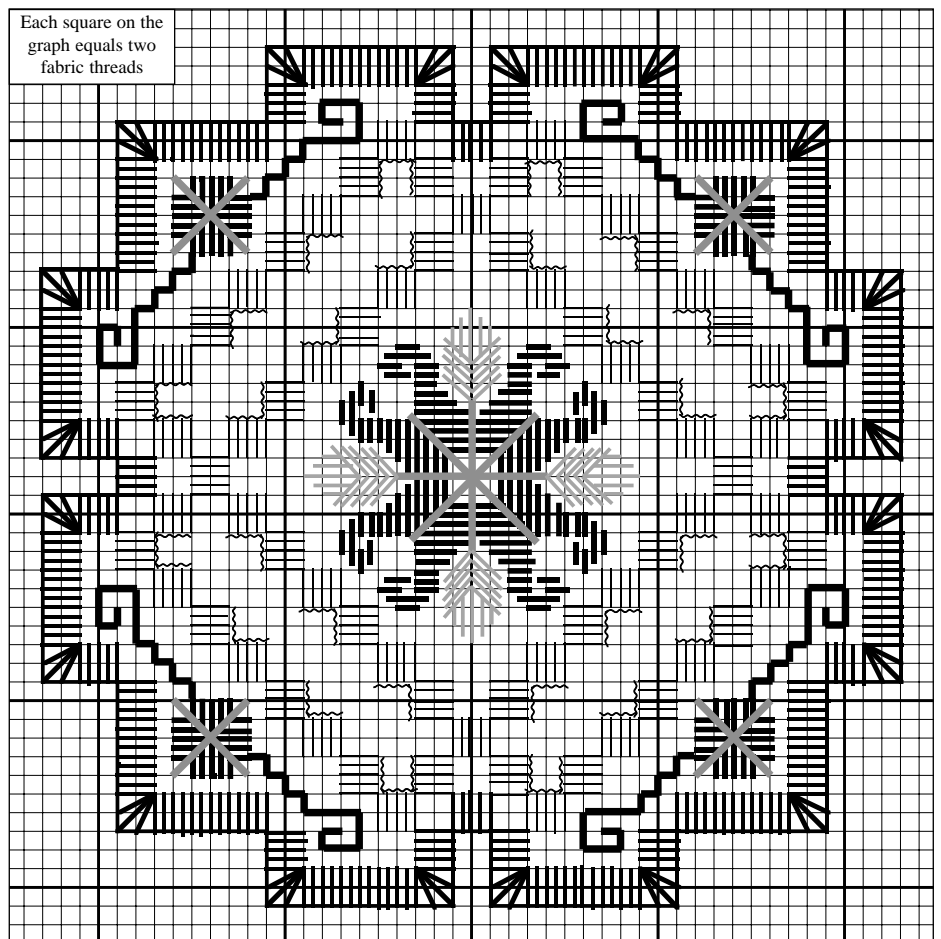
• Work the center poinsettia and four small corner flowers with Silk Serica 1116 in satin stitch.

• Work the leaves surrounding the poinsettia center flower with Silk Serica 4066 in Satin Stitch, and the vines in the corners in double running stitch. Hide all ends under the backs of flowers.

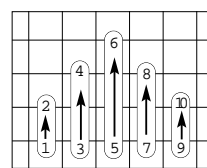
• Work the diagonal long stitches over the flowers with three strands Silk Mori 7087. All diagonal stitches go in the center hole like an eyelet.

• Cut the threads close to Kloster blocks marked "~~~~" and remove. Then work woven bars with 3 strands Silk Mori 8000.

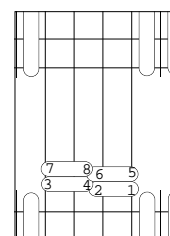
• Cut out around buttonholing (close to the thread, but be sure that you don't cut your stitching) and attach a small loop to one corner for hanging.



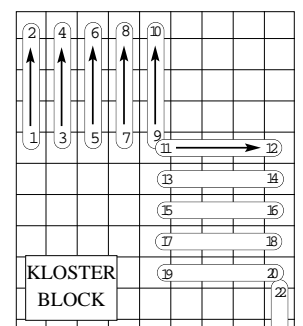
BUTTONHOLE STITCH



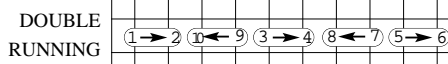
SATIN STITCH SAMPLE



WOVEN BARS



KLOSTER BLOCK



DOUBLE RUNNING