

Southern Grace

A DESIGN ON CANVAS CREATED BY MEREDITH BARNHILL

Materials needed:

- Kreinik Silk Serica® in 7124, 3045
- Kreinik Silk Mori® in 7124, 3045, 1105, 4206, 4204, 4203
- Kreinik Tapestry (#12) Braid™ in 085, 032
- Kreinik Cable™ in 001P, 002P
- #5 Jaceron in silver (a real metal)
- #8 Jaceron in silver (a real metal)
- #13 Frieze Brilliant in silver (a real metal)
- Kreinik silver Couching Thread

Instructions:

FLOWER PETALS: The petals are worked in *Skip Tent* using Cable 001P Silver and 002P Gold. Use short strands to keep the thread looking its best. First, using 1-ply 001P Silver, execute all of the basketweave every other row, stitching the entire flower, including the petal division lines. (See Diagram #1) Be sure to secure your beginning and ending threads under the edge of the flower.

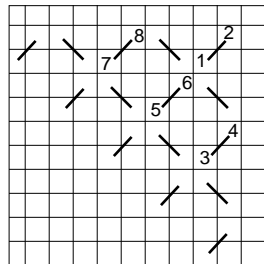
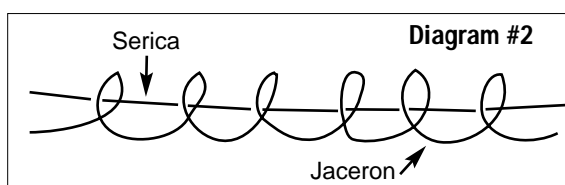


Diagram #1

Next, using 002P Gold, turn your canvas 90 degrees and execute the same stitch, again securing the thread tails under the edge of the flower. Complete the entire flower before proceeding to another area.

PETAL OUTLINE: Using old scissors, cut a piece of the #8 silver Jaceron about 1.5 inches long. Holding the Jaceron by the very last coil on each end, pull gently and evenly until the length is almost doubled. Gently shape the coil to fit the petal on the canvas, trimming any excess. Straighten the Jaceron, and cut a piece of Silk Serica 3045 Medium Dresden Rose 4 inches longer. With 2 inches Serica remaining

beyond the end of the Jaceron, pinch the Jaceron and Serica between your thumb and finger at Point 'A' (See Diagram #2), and coil the Serica into the grooves of the Jaceron. Once again, shape to fit the petal and couch with 1-ply Silk Mori 3045 Medium Dresden Rose. Thread the loose ends of the Serica, sink to the back of the canvas, and secure. Continue until all of the petals are completed.



OUTERMOST PETAL OUTLINE: Using approximately 6 inches of silver #5 Jaceron, pull each end gently to lengthen to 9 inches. Place the Jaceron on the outside edge of the petal, beginning at the stem of the flower, and couch every fifth or sixth coil with silver silk couching thread. Trim any excess Jaceron.

PETAL VEIN: Cut several pieces of #5 Jaceron the length of the indentations of the petals. Only stretch the Jaceron slightly to allow the silk couching thread to be couched inside the coils. Bend the Jaceron to the same shape as the indentation, and couch with the silver silk couching thread. Anchor carefully so no stitches show on the front.

FLOWER CENTER: Cut approximately 10 small (1/8") pieces of #13 Frieze Brilliant. Using silver couching thread, place a small piece of metal on your needle as you would a bead. Stitch these in the center of the flower in a random fashion, changing the direction of the pieces in order to best catch the light. Using 2-ply Silk Mori 1105 Med. Dark Mauve, work random French Knots around the outside of the silver Frieze Brilliant.

STEM: Using 1-ply of each Silk Mori 4206 Dark Sage and 4204 Medium Sage, work a random Split Stitch for the entire stem. (See Diagram #3)

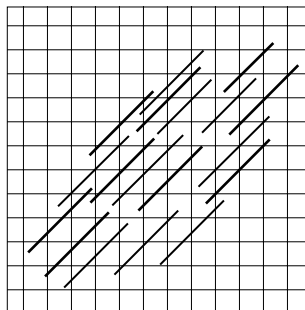


Diagram #3

The stitches are random lengths, splitting into the row above.

LEAVES: Using 2-ply Silk Mori 4204 Medium Sage for the top and bottom leaves, and 2-ply Silk Mori 4203 Light Sage for the remaining two, execute all four leaves in a free-form Herringbone. Work the leaf beginning at Points 'A' and 'B' on Diagram #4, returning to the top to "fill in."

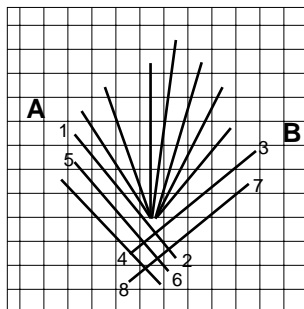


Diagram #4

DRAGONFLY BODY: Using Tapestry (#12) Braid 085 Peacock, work the head according to Diagram #5. Working over 2-3 canvas threads per loop, chain stitch to form the body, then place one backstitch for a tail. Using 2-ply Silk Mori 4204 Medium Sage, place a French Knot inside each loop of the chain stitch. Using 1-ply Silk Mori 4204 Medium Sage, place two backstitches for antennae on top of the head.

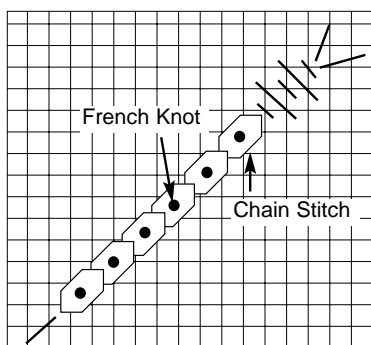


Diagram #5

DRAGONFLY WINGS: Work a Woven Picot approximately 1/2" long for each of the four wings, referring to the photo for placement. See Diagram #6 (you may wish to research this stitch in one of your favorite needlepoint books for additional assistance).

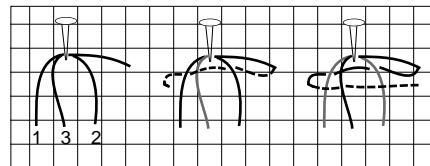


Diagram #6

BACKGROUND: Using cream Silk Mori 7124 and Silk Serica 7124, work the background in a Darning Pattern. Referring to Diagram #7, stitch all of the Silk Mori pattern first. Since the Silk Serica is not couched, but simply long threads running from the top of the canvas to the bottom, work these stitches last. Be very careful when removing the canvas from your stretcher bars for framing as these long stitches are easily caught and pulled.

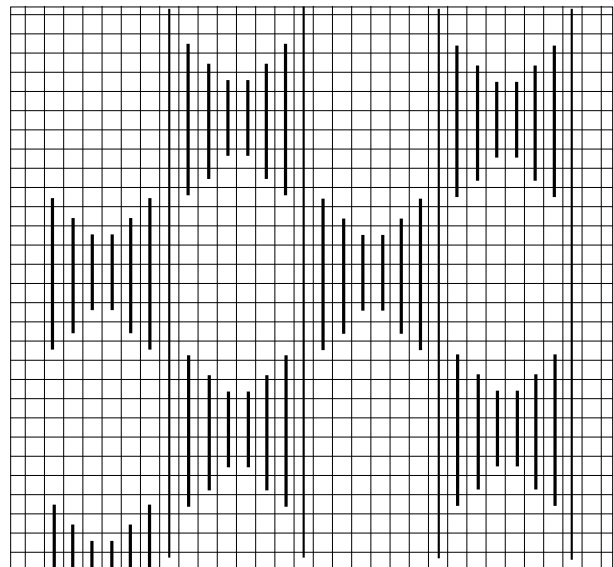


Diagram #7



Main outline for Southern Grace (trace outline onto canvas)



About the designer

Learning to stitch at the early age of 6, Meredith Barnhill's life-long love of needlework is apparent in all facets of her business and personal life. She opened her Lexington-Kentucky retail shop, M's Canvashouse, in 1991, where she regularly teaches embellishment classes. She has also taught for ANG and EGA guilds. She is currently serving as the Opportunity Basket Chairman of the American Needlepoint Guild. In 1999, she became a partner in the Elizabeth Turner Collection/Designer Belts Unlimited, and currently enjoys designing for the company.

