

MY NEEDLE'S WORK

A silk sampler design by Kandace Thomas

Materials needed:

- 1/2 Skein™ (2.5m) of Kreinik Silk Mori in each color: 1117, 4164, 4167, 7124, 7133, 6086
- 32-count Zweigart Lugana in mushroom color
- #26 Tapestry needle

Instructions:

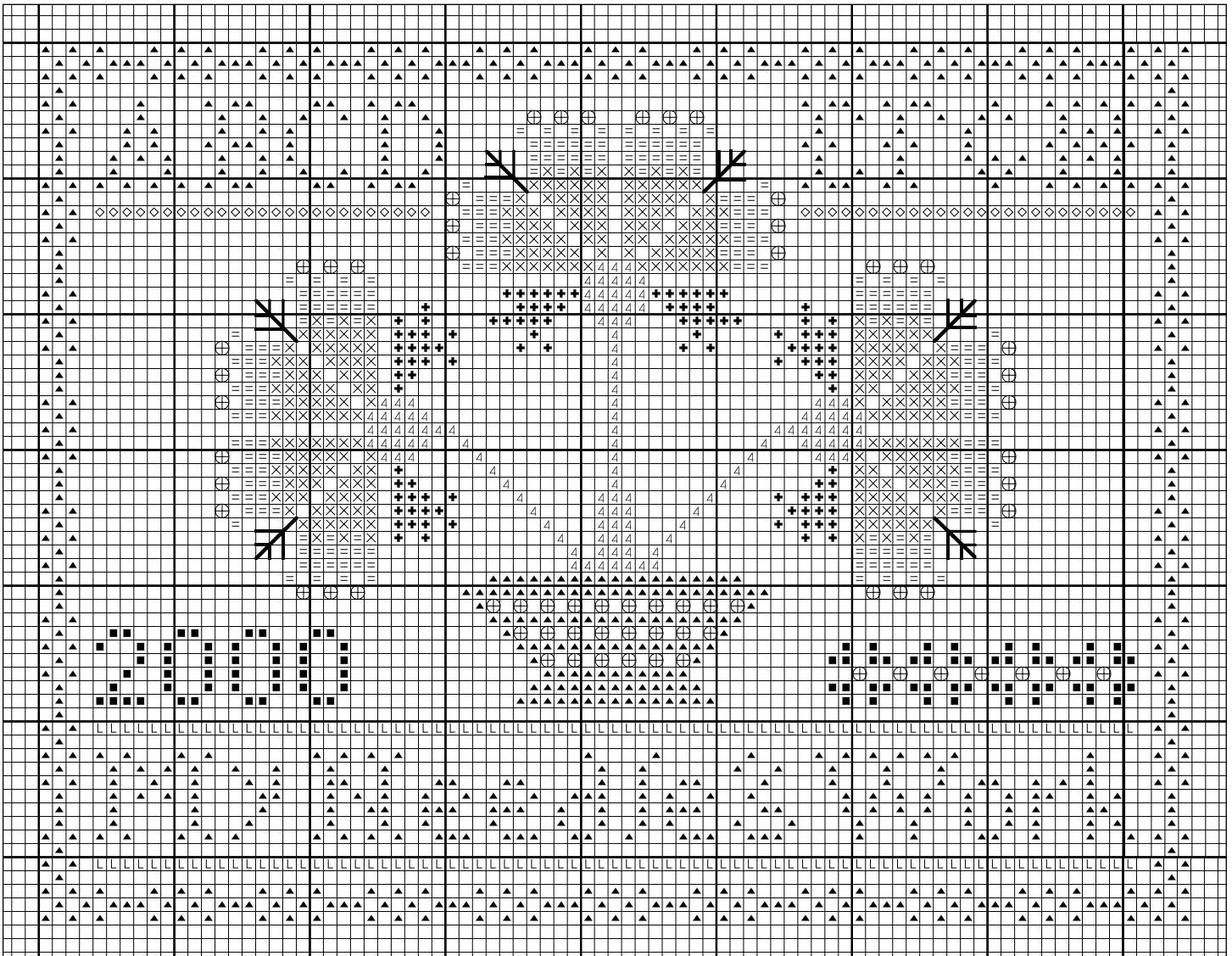
Design uses the following stitches: straight stitch, cross stitch, upright cross stitch, smyrna stitch, four-sided stitch, backstitch, and double backstitch. *Each square on the graph equals two fabric threads*

- All stitches use one strand of Kreinik Silk Mori.
- All stitches, except straight stitches, are worked over two threads across and two threads down.

Color & Symbol Key:

- ▲ Cross stitch with 7133 Light Bark
- × Cross stitch with 1117 Vy Dk Christmas Red
- = Smyrna stitch with 7124 Cream
- 4 Cross stitch with 4167 Vy. Dk. Vict. Green
- ⊕ Upright cross stitch with 6086 Dark Grape
- + Cross stitch with 4164 Md. Victorian Green
- ⌒ Double backstitch with 4164 Md. Vict. Green
- ◇ Four-sided stitch with 7124 Cream
- Cross stitch 6086 Dark Grape
- Backstitch with 6086 Dark Grape

DESIGN SIZE: 85W X 65H



For tips and information on using Kreinik Silk Mori, visit the Silk Mori page on www.kreinik.com. Share questions by contacting us at 1-800-537-2166 from 8:30 a.m. to 5 p.m. EST Monday through Friday, or emailing us at kreinik@kreinik.com.