

WINDOW TO

A Garden in Silk

DESIGNED BY DEBRA VANOVERLOOP
USING KREINIK SILK MORI AND SILK SERICA


Materials needed:

- Kreinik Silk Mori 1092, 1105, 1107, 3011, 4163, 4166, 8000 (one 2.5m skein of each)
- Kreinik Silk Serica 1092 and 8000
- 28-count white linen
- sharp scissors for the cut areas

This design would look lovely made into a sachet bag as a gift or for yourself. For a more advanced application, stitch this design on the pocket of a purchased white linen shirt (dry clean only).

Instructions:

NOTE: This design is stitched over two threads on linen, so each square on the chart equals two fabric threads.

1. Work all cross stitches according to the color key using two strands of Silk Mori. Separate the strands of Silk Mori by removing the paper wrapper and loosening the slip knot holding the thread ends together. Cut a 15-inch length and remove one ply at a time, straightening the thread after each ply has been removed.
2. Work all Kloster Blocks using Silk Serica 1092 Lightest Wood Violet. Use it straight off the reel, as a 3-ply twisted filament silk. Lay each stitch carefully, letting your needle dangle after each stitch to let the thread relax. Apply a slight countertwist to your needle as you stitch if you notice the thread becoming untwisted or too tightly twisted.
3. Separate Silk Serica 8000 Soft White into three strands by cutting a 15-inch length and applying a countertwist to separate the thread. (Do not separate the three strands any further.) Stitch the Eyelet stitches in the areas on the right side of the diamond using one strand of this Silk Serica 8000. You may wish to moisturize your fingers with a non-greasy hand cream to keep the filament silk from snagging on rough spots.
4. Now cut and remove the fabric threads in all the areas marked with a dotted red line on the inside of the diamond along the edges of the Kloster Blocks. Be very careful not to cut any more than the specified threads. *(If this is your first time, we recommend contacting the staff at your local needlework store for assistance with cutting thread in Hardanger.)*
5. Using one strand of your separated Silk Serica 8000, wrap all the bars in the center of the diamond area. Make sure the threads lie neatly.
6. With one strand of Silk Mori 8000, work the Dove's Eyes in the areas marked by a .
7. After all the above stitching has been completed, use one strand of Silk Mori 8000 Soft White to work the Twisted Bar and Needleweaving in the four areas that resemble spider webs.

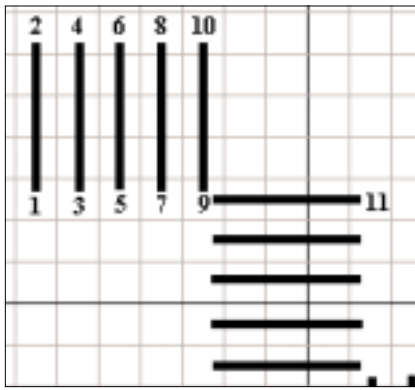
Color Key:

- Silk Mori 1092 Lightest Wood Violet
- + Silk Mori 1105 Medium Dark Mauve
- Silk Mori 1107 Very Dark Mauve
- ◻ Silk Mori 3011 Very Pale Coral
- 3 Silk Mori 4163 Light Victorian Green
- × Silk Mori 4166 Dark Victorian Green

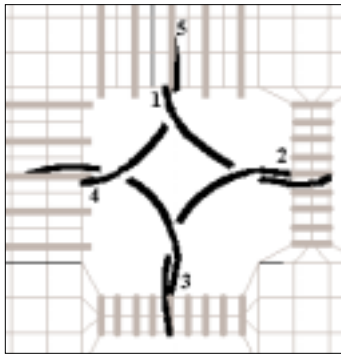
Finished size on 28-count is 2 5/8" wide by 2 5/8" high. Design size is 39w by 38h.

For tips and information on using Kreinik silk threads, visit the Silk Serica and Silk Mori pages on www.kreinik.com, or call our Consumer Info line at 1-800-537-2166. You may also wish to call us at that toll-free number to find a shop near you that carries these silk threads, or contact the mail order source Nordic Needle at 1-800-433-4321.

Stitch diagrams:



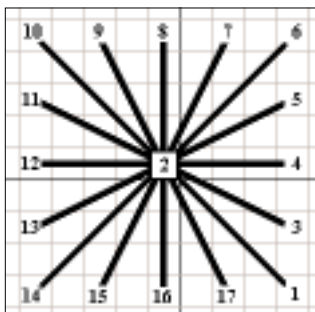
• **Kloster Blocks (above):** Come up at 1, down at 2, up at 3, down at 4, up at 5, down at 6, up at 7, down at 8, up at 9, down at 10, up at 9 again and down at 11. Continue in this manner around the entire designer. Watch your tension that you don't pull too tightly making holes begin to show in the fabric.



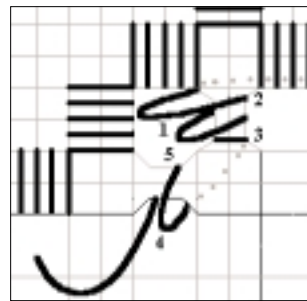
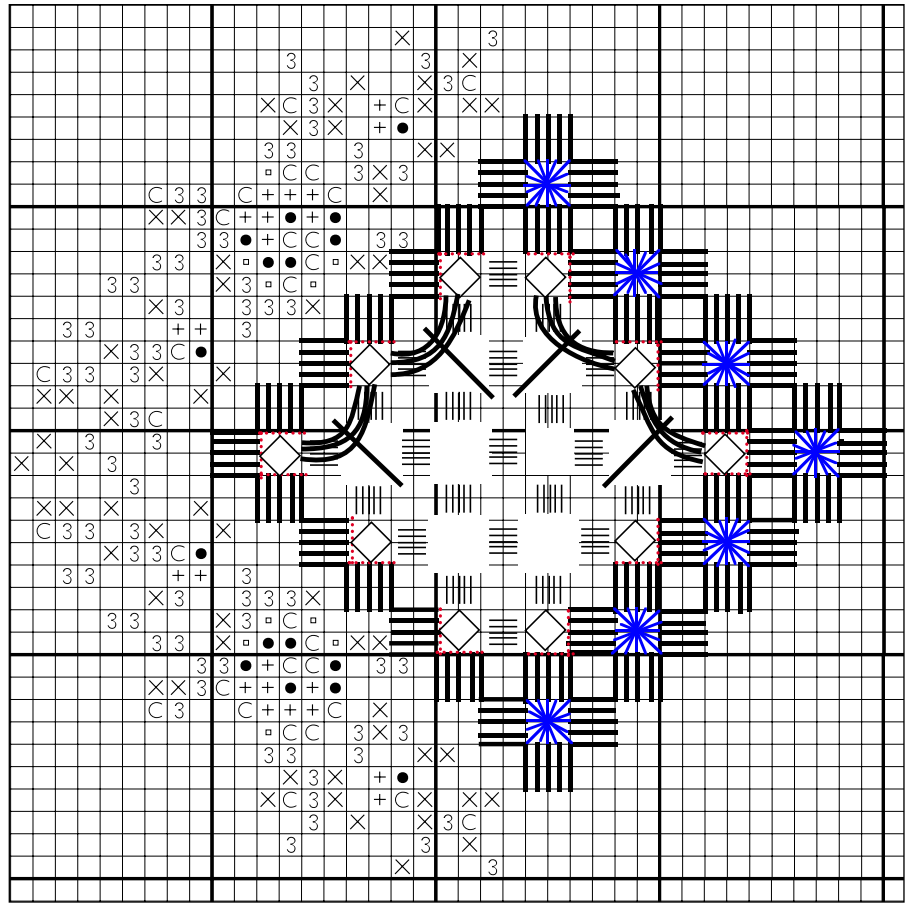
• **Dove's Eye:**

Secure the working thread behind the block nearest point 1. It's important that ALL four sides of the Dove's Eye cross exactly the same. Weaving in a clockwise direction, come out into the

center of the open area (1) and over the top of the wrapped bar and back up in the center of the open area, making sure that the working thread is under the tip of the needle (2). Work the next bar the same way (3) and continue to the third side piercing the block in the center and coming out in the open area again (4). To finish the last stitch of the Dove's Eye, you will need to bring the tip of the needle under the first leg and then pierce the block at point 5. Finish by running the thread under the back of the blocks and move on to the next Dove's Eye.

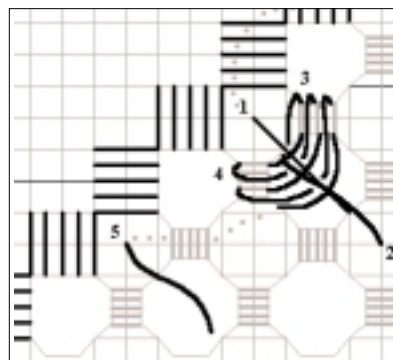


• **Eyelet:** Come up at 1, down at 2, up at 3, down at 2, up at 5, down at 2, etc. Continue around the rest of the stitch. Each time you bring the thread up through the fabric, give the thread a slight tug to help in opening the center hole.



• **Wrapped Bars:** Secure working thread under blocks and come up in open area at 1. Wrap thread around fibers at 2, then under the fibers and out at 1 again, pulling thread snug as you wrap, pulling the fibers together. Continue wrapping until you have wrapped the

entire side. Bring the working thread to the backside at 3 and out at point 4. Begin wrapping the next side by going down at 5 and coming back out at 4. Continue in this manner until all the sides are wrapped in the design. It's important if your thread is getting short try to end near a block and start a new thread.



• **Twisted Bar & needleweaving:** Weave thread under blocks and through fabric at 1. Go down through center opening and then up at 2. Wrap thread around the 1-2 stitch twice and then go under the 1-2 stitch and under the bar and out at 3. Begin

weaving back and forth from 3 to 4 until bars are filled. The threads need to lay next to each other neatly.