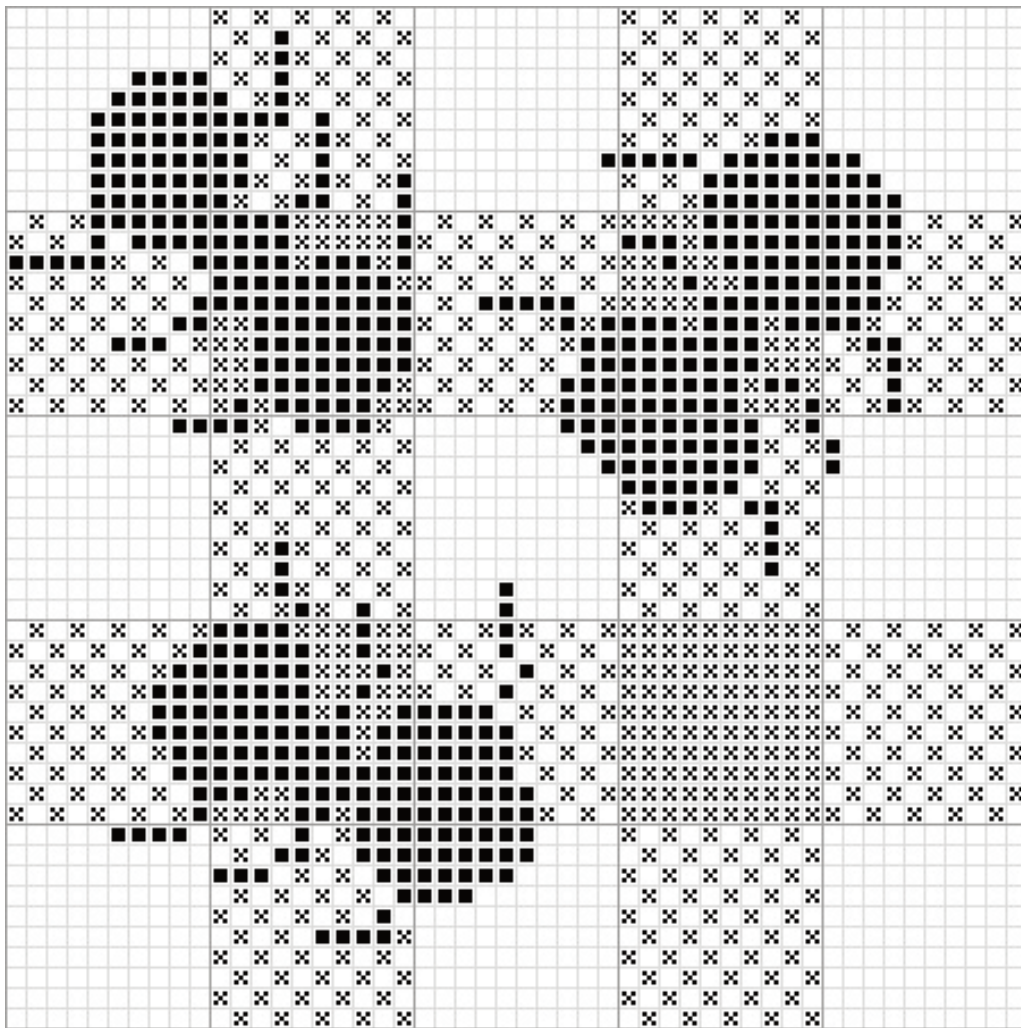




Picnic Time!

a Kreinik classic
by Ruth Schmuft



Instructions:

- ✕ Any shade of embroidery floss
- Very Fine #4 Braid 005 Black

Cross stitch this design on a purchased Charles Craft Royal Classic napkin, a 14-count Aida with fringed edges. Stitch in the center or in a corner of the napkin.

Use two strands of floss or one strand of Very Fine Braid according to the color key and chart.

Kreinik metallic threads are hand and machine washable.

Do not iron directly on the metallic, however.

Test your floss for color-fastness before washing a stitched piece.

Design size: about 3.5 inches square

PO Box 1966, Parkersburg WV 26102 USA
Consumer Information: 1-800-537-2166
or www.kreinik.com

Visit www.kreinik.com for Stitch Library,
online videos, Store Locator & more