



# Silk Sampler Basket

DESIGNED BY MARY POLITYKA BUSH

*Enjoy the softness of silk threads working through your fingers as you stitch this design. Mary has created a small-yet-dynamic project that shows off the natural lustre of pure silk threads—a lustre that is unattainable if you were to substitute cotton or rayon for the silk. This is stitchery at its best; a treat for the fingers and the eyes.*

## Materials needed:

- Kreinik Silk Mori® 7087 Very Dark Straw, 1094 Medium Wood Violet, 1096 Dark Wood Violet, 4077 Very Dark Dusty Green
- Kreinik Silk Serica® 7087 Very Dark Straw
- 28-count Jobelan in Light Moss (item #429-93 from Wichelt Imports, Inc.)
- #24 Tapestry needle
- 3" squares of 14-ct plastic canvas and lightweight cardboard
- 1 1/2" pinback

## Key:

*Each square on the graph equals two fabric threads.*

**BASKET:** 7087 Silk Mori, 3 plies, 2-way satin stitch

**RIM, HANDLE:** 7087 Silk Serica, 1 ply, cross stitch

**BASE:** 7087 Silk Serica, 2 plies, long-armed cross stitch

**FLOWERS:** Silk Mori, 2 plies/spokes, 4 plies/weaving, ribbed spider (Right: 1096; center: 1094; left: 2 plies 1096 + 2 plies 1094)

**LEAVES:** 4077 Silk Mori, 2 plies, lazy daisy (placed randomly)

**BORDER:** 4077 Silk Mori, 2 plies, blanket stitch

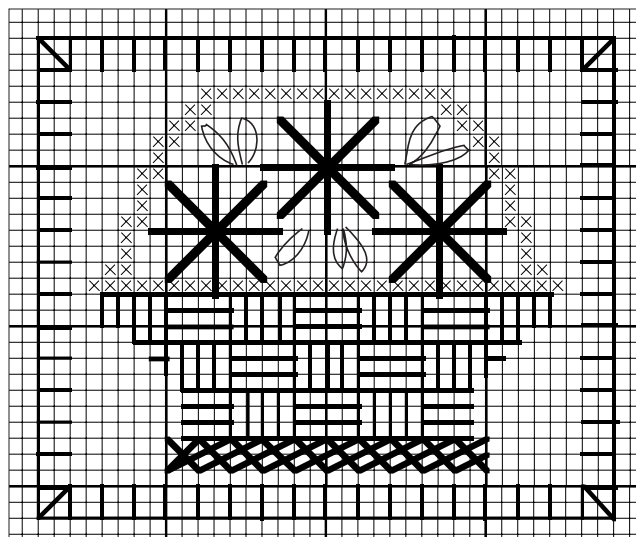
## Hints:

*For full tips and information on Kreinik Silk Mori and Silk Serica, visit their pages on [www.kreinik.com](http://www.kreinik.com).*

- Use a non-greasy hand cream to moisturize cuticles and fingers to keep the silk from snagging on rough spots.
- Use 15" to 18" lengths of silk for greater control (ie, less tangling and fraying from too many passes through the fabric).
- Strip and reassemble plies of silk before stitching. Separate Silk Serica by applying a countertwist to the 3-ply twisted thread. Separate into 3 plies; do not separate any further.
- Lay multiple strands of Silk Mori or Silk Serica parallel for a neat appearance and for the maximum amount of sheen.
- Let your needle dangle occasionally to relax the thread.

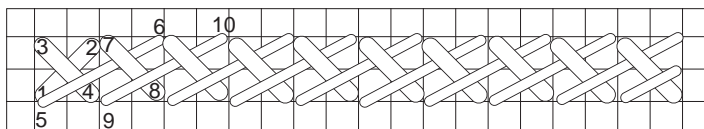
## Finishing:

Trim fabric to within 1/2" from design. Sew pinback to 36x29-mesh plastic canvas. Cut cardboard the same size as design, lay on wrong side of design, wrap fabric over edges. Sew plastic canvas to back of pin with leftover Silk Mori.

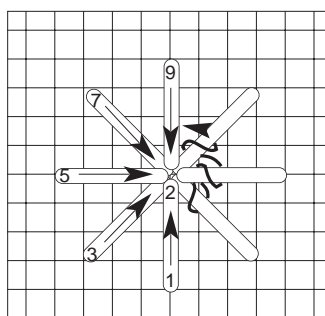


© Copyright 2005 Kreinik Mfg. Co., Inc.

## Stitch diagrams:

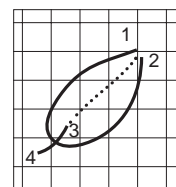


**Long-armed cross:** come up at 1, down at 2, up at 3, etc.



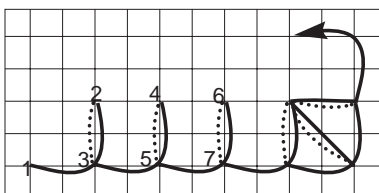
**Ribbed spider:** build the spokes by coming up at 1, down at 2, up at 3, down in the center hole, etc. Then start in the center and work around the spokes, pulling the stitches snugly toward the center as you go.

coming back up at 3 and down at 4 to tack the outer edge of the loop.



**Lazy Daisy:** come up at 1 and down at 2,

coming back up at 3 and down at 4 to tack the outer edge of the loop.



**Blanket stitch:** working from left to right, come up at 1, down at 2, up at 3, down at 4, etc. The dotted lines represent the thread you're carrying on the back.

**Satin Stitch:** come up at 1, down at 2, up at 3, down at 4, etc. Keep strands of thread parallel as you lay each stitch in order to achieve maximum sheen and neat appearance.

