

Christmas Pillow Ornament

Designed by Kathy Holicky

A Classic Kreinik ornament featuring classic Christmas colors. Makes a wonderful gift for friend, party hostess, family member, or for your own tree.

Materials needed:

- 5" square of 22-count White Hardanger fabric (Zweigart)
- Kreinik Fine #8 Braid 002 Gold
- Kreinik Blending Filament 003 Red
- Mill Hill Beads #557 Gold - 24
- 11mm clear teardrop crystal
- white sewing thread to attach beads and assemble

Instructions:

1. Find the center of your fabric, count over 2 threads and begin Section A working with the Fine #8 Braid. Bring your needle up on the odd numbers and go down on the even numbers.
2. Section B: Use 2 ply of the red Blending Filament. B is comprised of four sections all worked alike. Come up on the odd numbers and down on the even number 2 which is the common hole.
3. Section C: Use 2 ply of the red Blending Filament. Return to the center of your design. Bring your needle up on the odd numbers and down on the even numbers.
4. Section D: Use 2 ply of the red Blending Filament. Return to the center of your design. Bring your needle up on the odd numbers and down on the even numbers.
5. Section E: Use 2 ply of the red Blending Filament. Count up eight threads from the top of Section D as shown on the master diagram. This would be point 2 on the stitch diagram. Move down two threads and over one. Begin, up on the odd numbers and down on the even numbers.

Finishing instructions:

See finishing diagram.

1. Create a hanging cord using leftover thread or create one using the Kreinik Custom Corder.
2. To make a puffy pillow, add some stuffing or cotton balls before sewing together.
3. Bring Point A together with Point B, fasten by sewing up to the point. Be sure to attach the hanger before you close off the end. Now bring your needle back down to Point B (from the inside). Fasten Point B to C and sew. Return to Point C, fasten with Point D and sew. Attach the crystal at this point. Now return to Point D and sew the last sem. Fluff up the four sides for added shape.

© Copyright Kreinik 2016. All rights reserved.

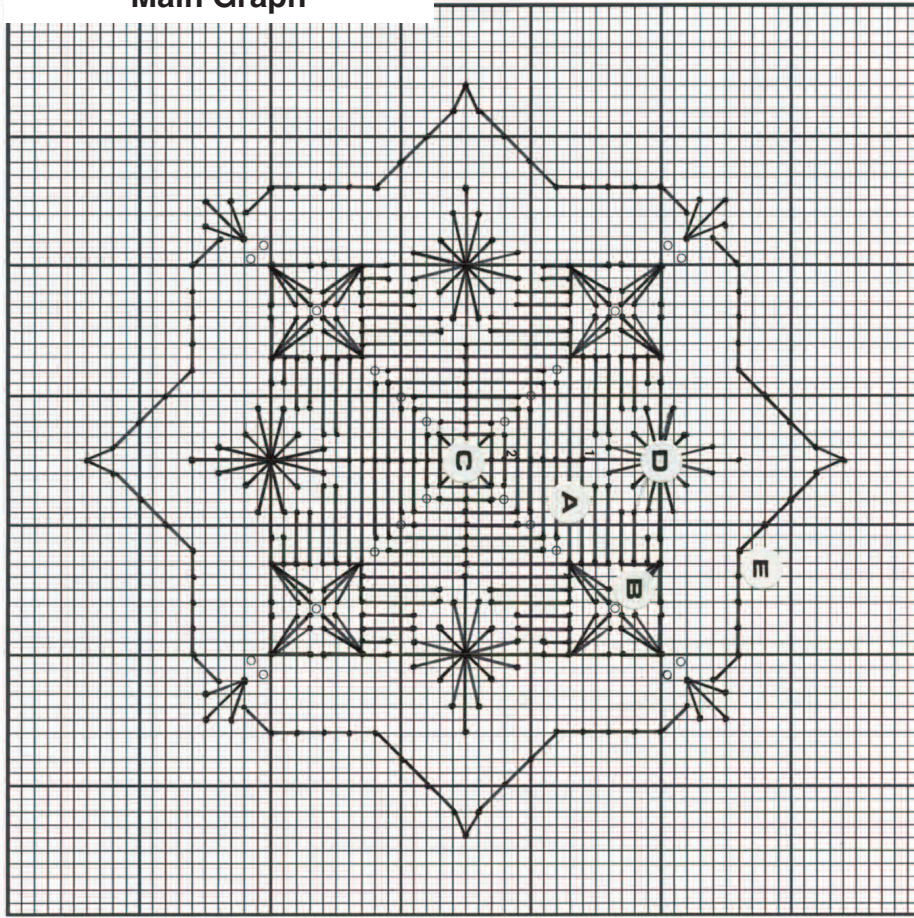
www.kreinik.com • 1-800-537-2166 • info@kreinik.com

Visit our factory outlet store Mon-Fri 10 a.m to 3 p.m. at 1708 Gihon Road, Parkersburg WV 26101 USA

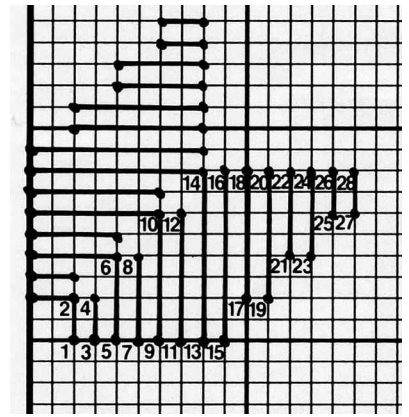


Main graph and stitch diagrams

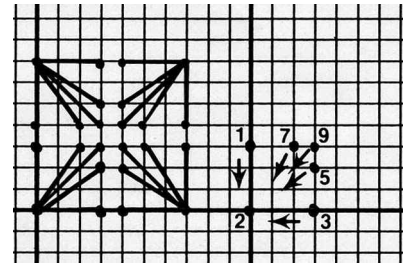
Main Graph



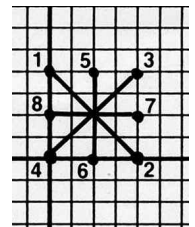
Section A



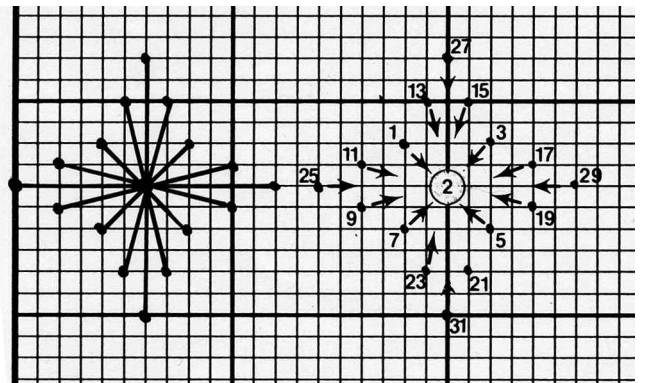
Section B



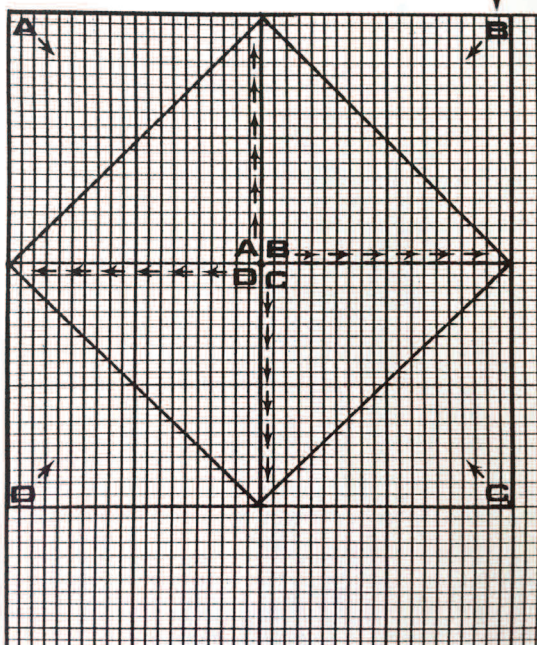
Section C



Section D



Finishing Diagram



Section E

