



Oh Christmas Tree

Design Size: 36 stitches wide x 36 stitches high

Materials Needed: • Britannia or Ivy Circle Tokens & Trifles™ 20-count perforated paper sewing card with #28 Tapestry needle, • Kreinik thread in colors listed in Color Key, • sharp embroidery scissors

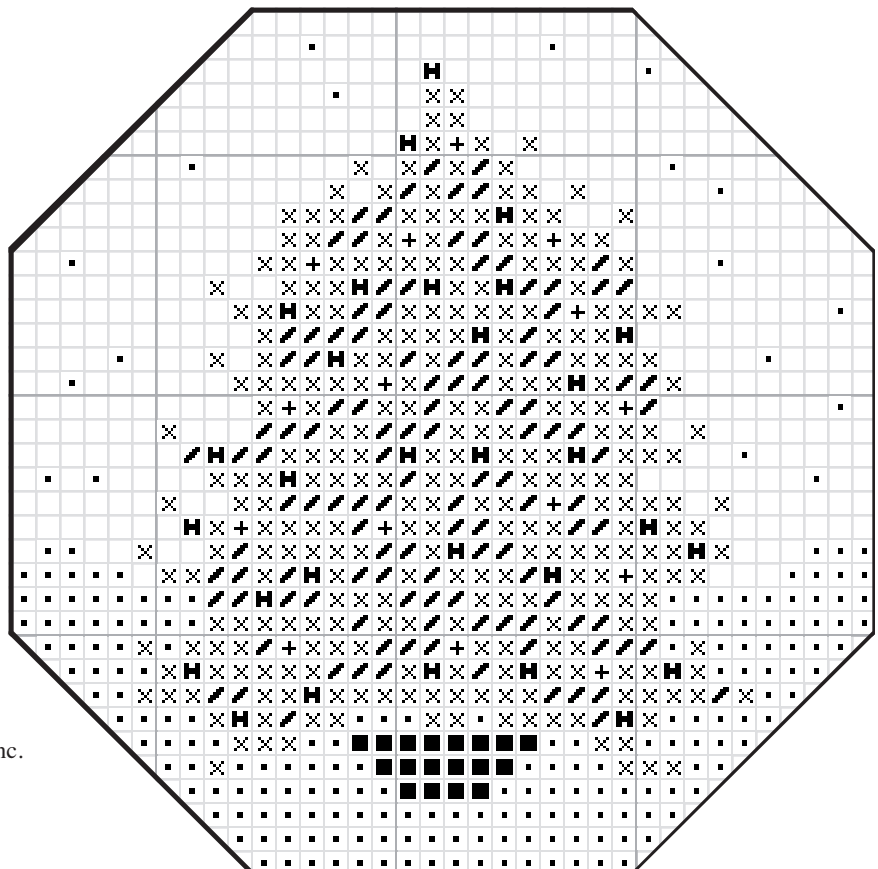
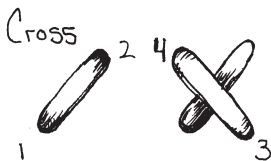
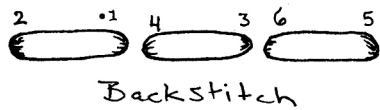
Instructions: Use a #28 needle when working with Tokens and Trifles™ sewing cards. Cross stitch using one strand of thread, following the color key. This design is stitched over one square on the sewing card so each square on the chart equals one square on the card.

Color Key:

- × Silk Mori 4204 Md Sage Green, one strand in cross stitch
- Silk Mori 7166 Dk Brown Black, one strand in cross stitch
- ✦ Silk Mori 4206 Dk Sage, one strand in cross stitch
- Kreinik #4 Braid 032 Pearl, one strand in cross stitch
- + Kreinik #4 Braid 3228 Topaz, one strand in cross stitch
- H Kreinik #4 Braid 198 Pale Green, one strand in cross stitch

When above stitching is complete, use **Kreinik #8 Braid 002HL** in long stitches as garland on the tree. Use **Kreinik Cord 205C** to tack down the “garland.”

Finishing instructions: Using an archival-safe glue or tape, attach backer card to the back of your needlework. Alternate: you can use extra strands of Mori to stitch in the decorative border, attaching the two cards.



© Copyright 2007 Kreinik Mfg. Co., Inc.
 May be reproduced but not sold.
 Consumer Info: 1-800-537-2166 or
www.kreinik.com