

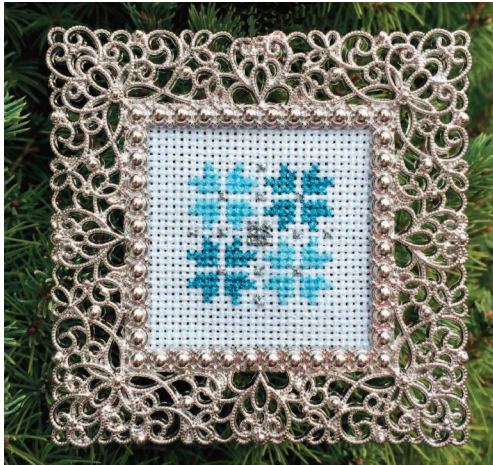


Blue Christmas Ornament

Many people go with “non-traditional” colors in their holiday decorating, deviating from classic red and green to instead use purple, pink, or blue. This quick-to-stitch ornament is perfect if you decorate in wintry shades of blue. The metallic thread reflects lights on a tree beautifully. A silver frame is the ideal quick-and-easy finishing.

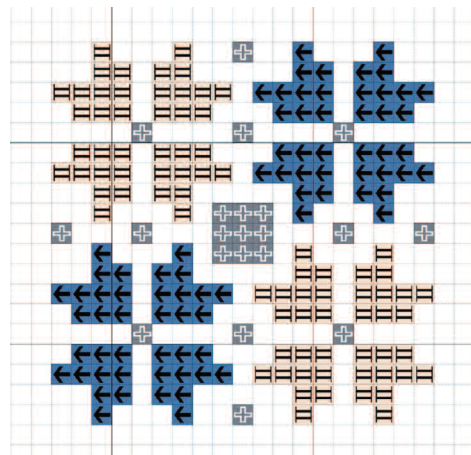
Instructions:




1. Cross stitch the design centered on your fabric using Kreinik Fine #8 Braid or Very Fine #4 Braid according to the color key.
2. When stitching is complete, trim as needed and insert into your purchased photo frame ornament.

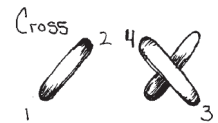


Materials needed:

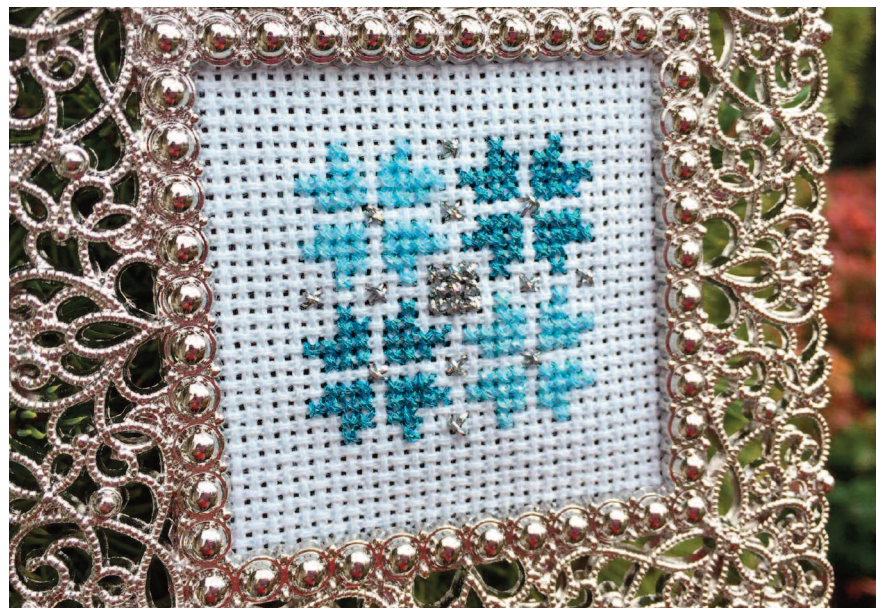
- 14-count Aida in light blue color
- Kreinik Fine #8 Braid in 001L Solar Silver
- Kreinik Very Fine #4 Braid in 094 Star Blue and 014HL Sky Blue Hi Lustre
- #24 Tapestry needle
- Purchased silver photo frame ornament (you can find these at stores like Target, craft stores like Michaels, dollar stores, etc)



-  Very Fine #4 Braid 094 Star Blue
-  Very Fine #4 Braid 014HL Sky Blue Hi Lustre
-  Fine #8 Braid 001L Solar Silver



In the stitch diagram, come up at 1, down at 2, up at 3, down at 4, etc.



© Kreinik Mfg. Co., Inc
PO Box 1966, Parkersburg WV 26102
www.kreinik.com · info@kreinik.com
1-800-537-2166