

A Berry Holly-day ornament

Designed by Kathy Holicky

This ornament design can be worked in either a white/gold or red/green colorway.

Materials needed:

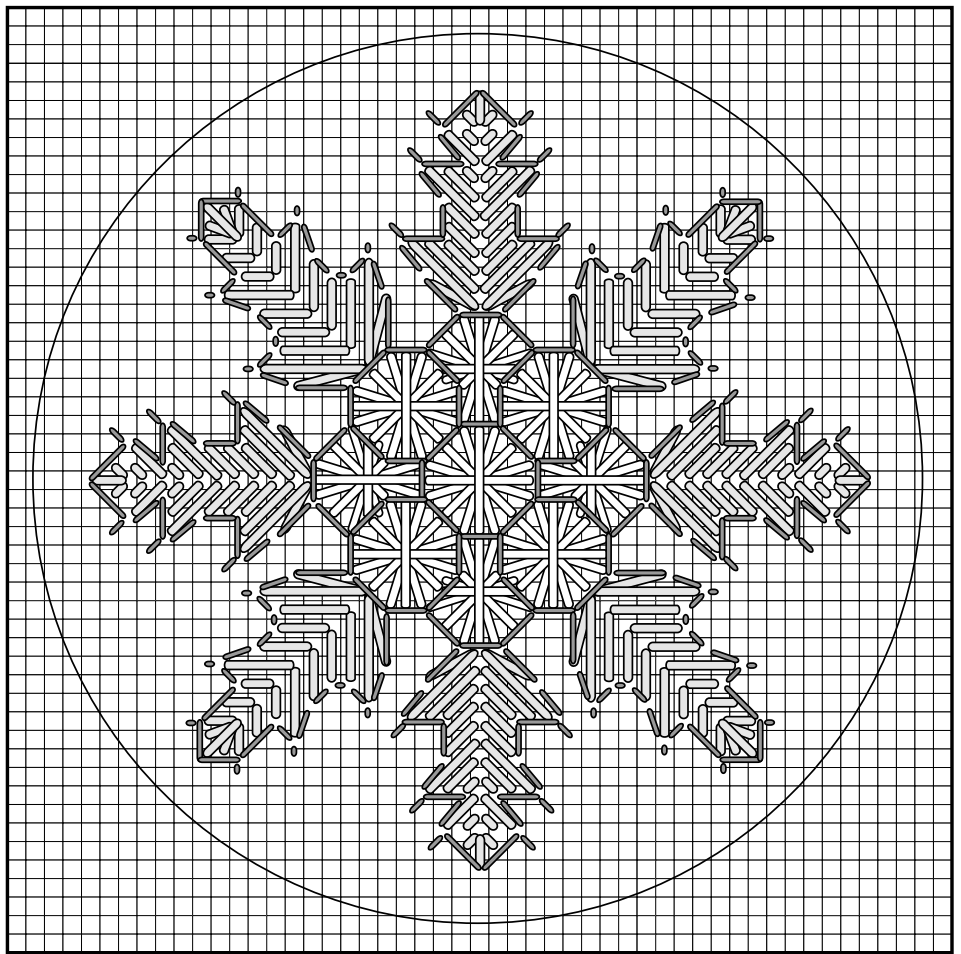
- 18-ct mono canvas in white, 5" x 5"
- FOR WHITE VERSION: Kreinik Silk Mori white 8000
- FOR RED/GREEN VERSION: Kreinik Silk Mori in red 1117, green 4036
- Kreinik Japan #5 Gold 002J
- Kreinik gold ornament frame
- Kreinik Treasure Tape™ dots

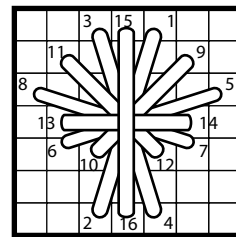
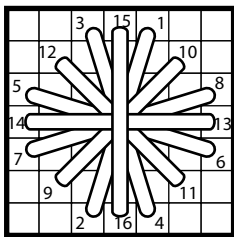
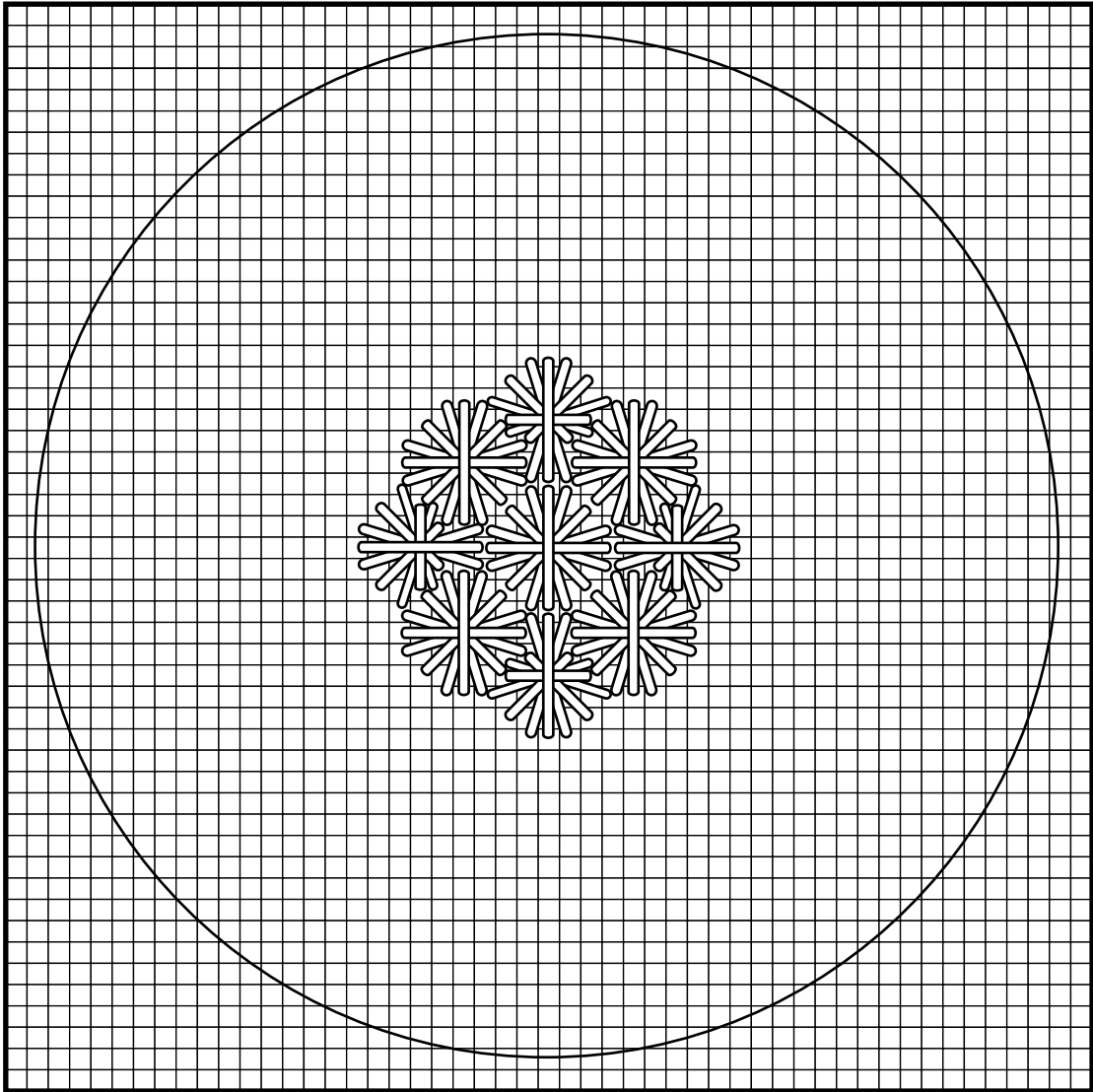
Instructions:

1. Use 4-ply of Silk Mori, or Japan just as it is (single strand) following the diagrams.

2. When stitching is complete, make a “sandwich” by layering the front of the gold ornament frame on top, followed by your stitched piece, and the gold ornament frame backer. Use Treasure Tape™ double-sided tape dots as the adhesive between layers. Add ribbons etc for ornament hanger as desired.

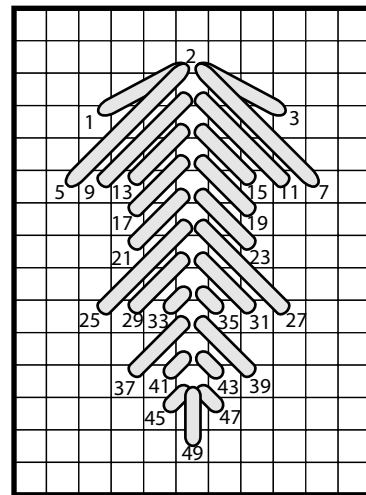
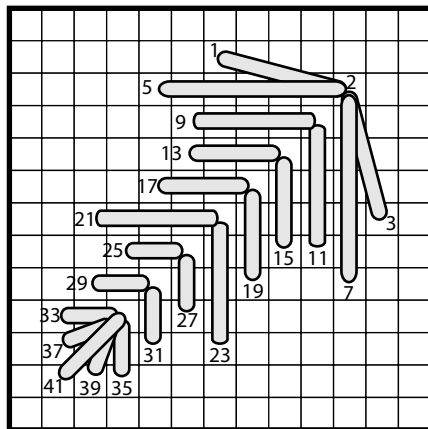
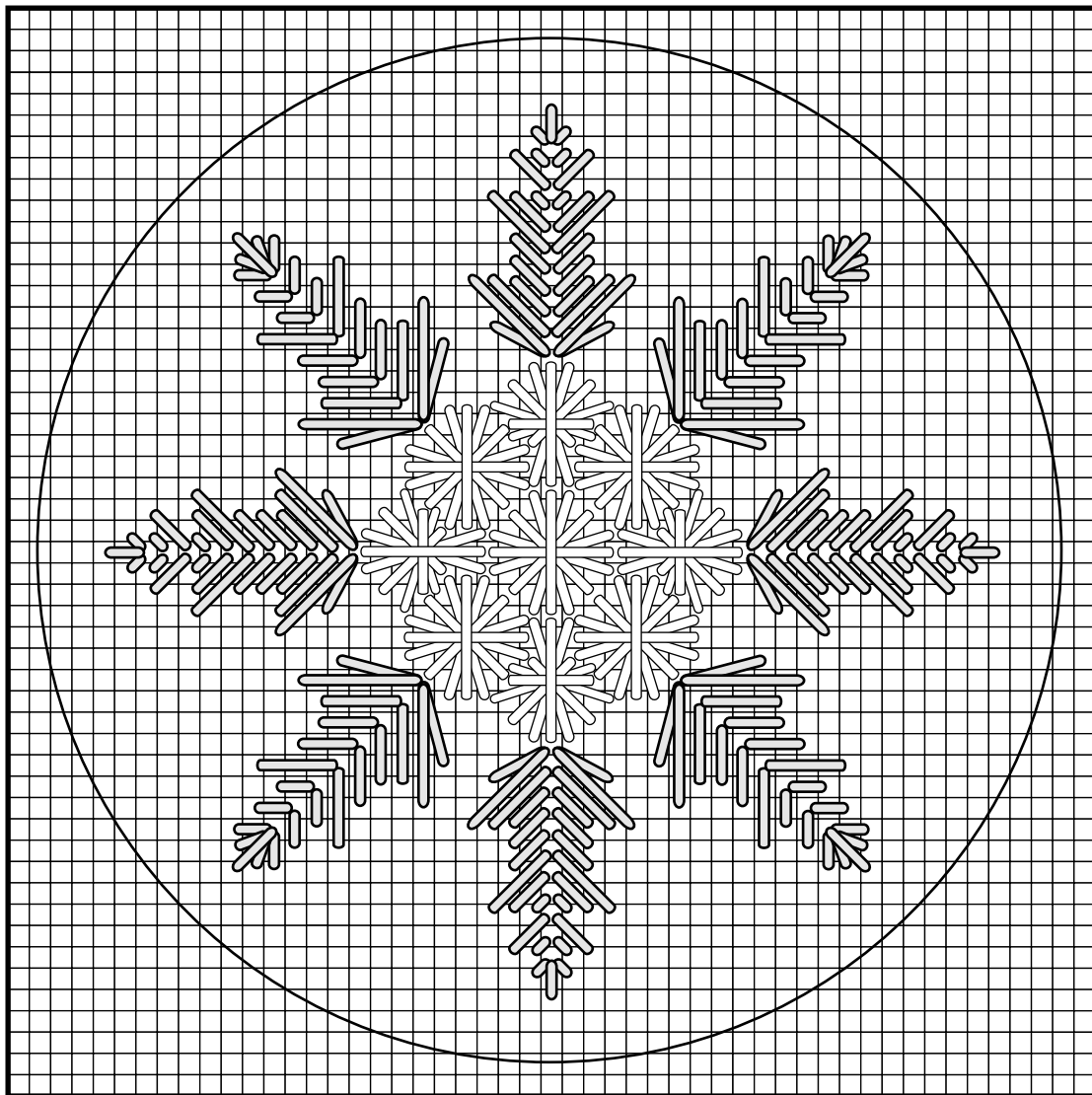
Main Graph
See next pages for diagrams



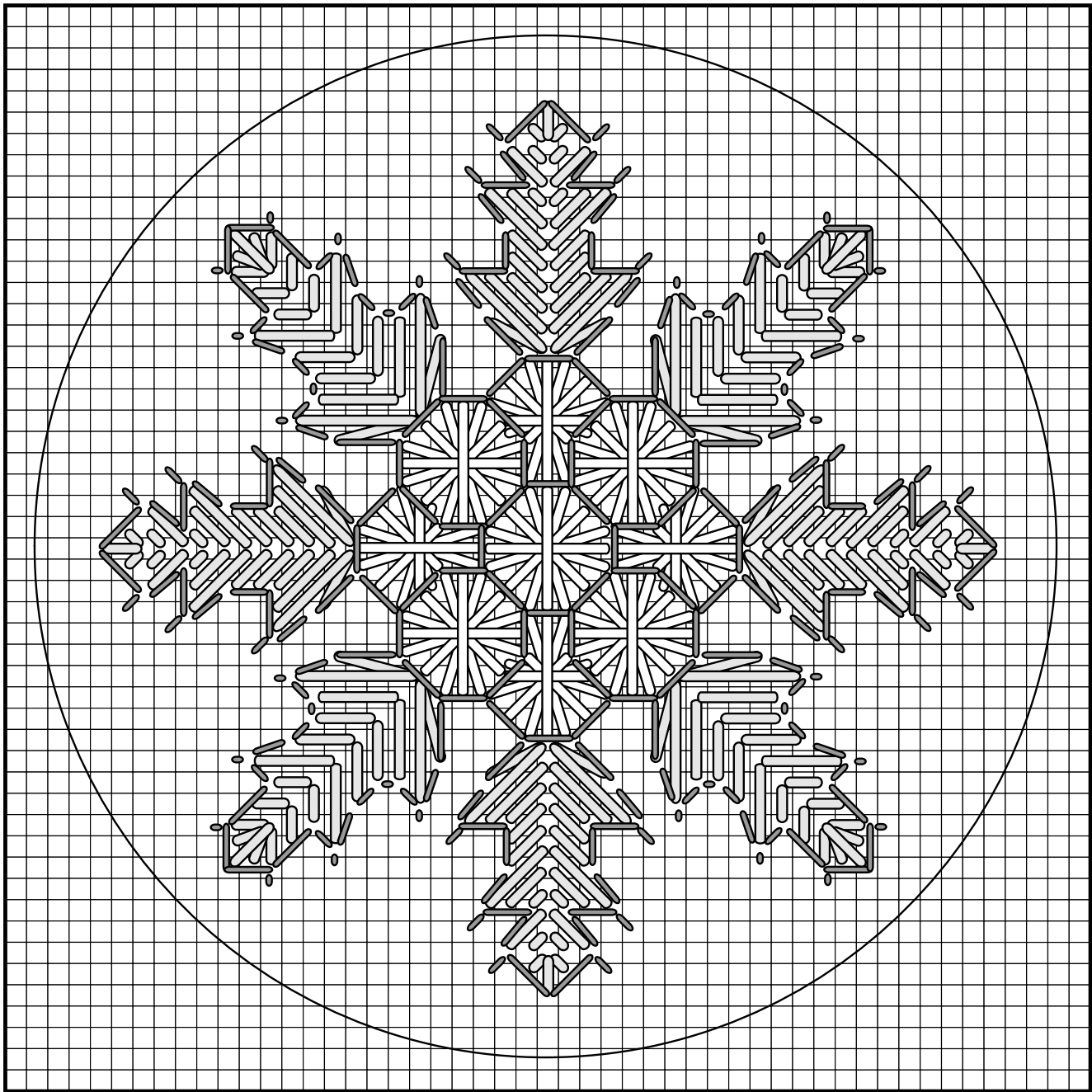


White - Work in 4ply Silk Mori #8000A

Red & Green - Work berries in 4ply Silk Mori #1117



Work white leaves in 4ply Silk Mori #8000A
 Work green leaves in 4ply Silk Mori #4036



Work backstitch in Japan Gold 002J